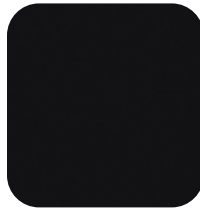


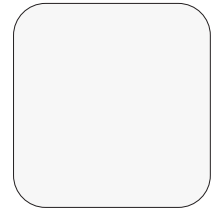
Poly: Eclipse



Black
(01)



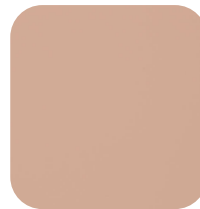
Light grey
(02)



White
(03)



Cherry red
(10)



Dusty rose
(12)

Details

The Eclipse collection's standard polypropylene shells are available in a refined palette of epoxy-coated hues—ranging from classic black, light grey, and white to more expressive tones like dusty rose, cherry red, and dark mint—offering both monochromatic and pastel options to suit diverse design themes. Each color is crafted on a bleach-cleanable, 100 % polypropylene shell, combining vibrant aesthetics with easy maintenance and long-term durability.

Makeup

Makeup: Polypropylene (PP)

Cleaning & Care

W + BC: Gently wipe off any spill or debris. After, dip a lint-free cloth into a mild soap and water mixture. Scrub gently over the stained area. For tougher stains, you may use distilled vinegar and a lint-free cloth. Repeat if needed. Bleach cleanable with a 10:1 (water to bleach) solution.

Qualities

Bleach cleanable
No antimicrobial additives
No flame retardant additives

Available On

Eclipse