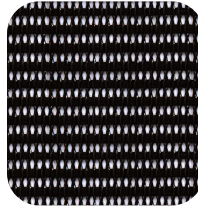


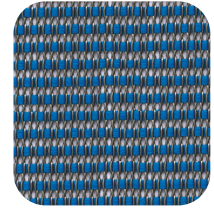
Mesh: Run II



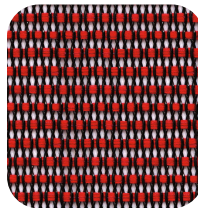
Charcoal black
(1R)



Grey
(2R)



Blue
(3R)



Red
(4R)

Details

The Run II mesh from Via Seating is a high-performance, 4-way stretch elastomeric mesh composed of 68% polyester and 32% elastomer, featuring a vibrant, exclusive palette that includes unique patchwork patterns tailored for the Run II chair. It's bleach-cleanable, free of antimicrobial and flame-retardant additives, and designed for easy maintenance—vacuumable and cleanable with mild soap and occasional dilute bleach for disinfection.

Makeup

68% Polyester, 32% Elastomeric

Cleaning & Care

WS + BC: To prevent overall soil, frequently vacuum and lightly brush the best to remove dust and grime buildup. Mix mild soap and warm water together and using a lint-free cloth, damp it a little bit into the mixture. Dab gently where the stain is located. Use a different, dry, lint-free cloth to dry the area. Repeat if needed. Infrequent use of a 3:100 bleach to water solution can be used for disinfection of the mesh.

Qualities

Bleach cleanable
No antimicrobial additives
No flame retardant additives

Available On

Run II